



The armchair *Tight* by Nicola Gallizia is presented with an essential modern line, typical of the language of origami, where forms and planes alternate without a solution of continuity. Entirely covered in fabric or leather, there is a contrast between the base, with a subtle but marked contour, and the enveloping seat that underscores the idea of comfort.

■ Finishes

Cover (fully removable)

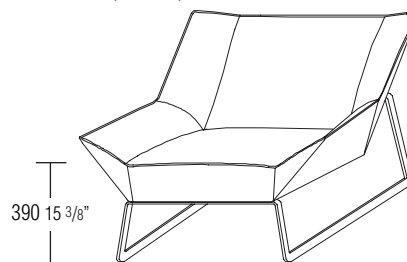
fabric
leather

Base

shiny chrome
black chrome

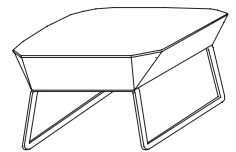
■ Dimensions

armchair
W 890 D 910 H 734
W 35" D 35 7/8" H 28 7/8"

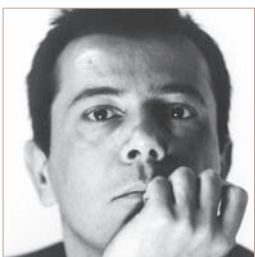


TPL1

pouf
W 640 D 560 H 400
W 25 1/4" D 22" H 15 3/4"



TPF1



Nicola Gallizia Born in Milan, Nicola Gallizia attended the Architecture Faculty at the Milan Politecnico. From 1990 to 1999 he worked with Luca Meda as assistant for the image and products for Molteni&C and Dada, companies for which he still works as image consultant and product developer. He has been art director and designer for the Camera group since 1999. For Penta he designed the lamps Wood (2000), China (2002) and Jei-Jei (2004). He has been working with Pitti Living since 2001 on fittings for exhibitions. In 2003 he took over responsibility for the image of Molteni&C., with particular attention to the new graphics project and the product catalogues, from their conception to the stand fittings for major fairs, and the design and fitting out of several stores. He designed the collection *Domino* for Molteni&C in 2004. In 2005 he opened the studio CZ36 in Milan, from where he designs and creates interiors.