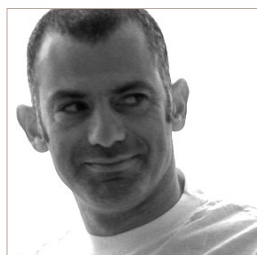




A simple but elegant bed, by Arik Levy, characterized by its upholstery in fabric or leather, its materials and its tailoring, typical of the most refined “couturiers”. A bed of limited size, easy to assemble and transport and available in various sizes, both in width and in length, to offer a complete range.



Arik Levy Arik Levy, born 1963 in Tel Aviv, Israel, studied industrial design at Art Center College of Design in La Tour de Peilz, Switzerland. He taught at the École Nationale Supérieure de Création Industrielle / Les Ateliers, Paris, and led design workshops at various design schools in Europe. At the same time he created stage sets for modern dance performances at the Grand Theatre in Geneva, for the Netherlands Dance Theatre, the Finnish National Ballet and the BatSheva Dance Centre in Israel. In 1997, he co-founded the firm “L design” with Pippo Lionni.

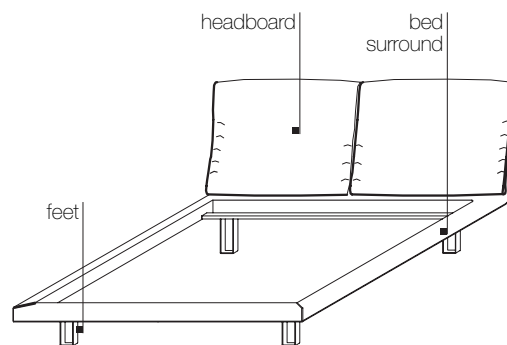
■ Finishes

Headboard and bed surround: fabric, leather

Turn up / edging for two-colour fabric upholstery:

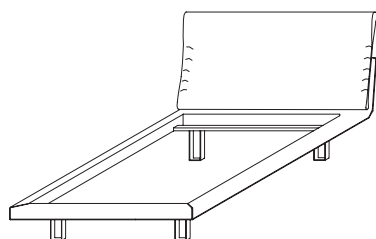
paper white, ecrù, hazelnut, brown, green, grey, black

Feet: black lacquered metal



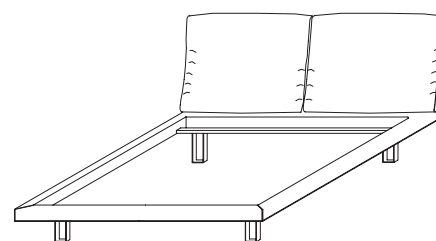
■ Types

**Beds for
mattress
bases**



HLE10 HLE12 HLEQS

**Beds for
mattress
bases**



HLE16 HLE17 HLE18 HLEKS

■ Dimensions

outer dimensions (cm)	HLE10	HLE12	HLE16	HLE17	HLE18	HLEQS	HLEKS
width L	106 - 41 ³ / ₄ "	126 - 49 ⁵ / ₈ "	166 - 65 ³ / ₈ "	176 - 69 ¹ / ₄ "	186 - 73 ¹ / ₄ "	159 - 62 ⁵ / ₈ "	199 - 78 ³ / ₈ "
length P	220 - 86 ⁵ / ₈ "	230 - 90 ¹ / ₂ "	230 - 90 ¹ / ₂ "	230 - 90 ¹ / ₂ "	230 - 90 ¹ / ₂ "	255 - 88 ⁵ / ₈ "	255 - 88 ⁵ / ₈ "
height H	96 - 37 ³ / ₄ "	96 - 37 ³ / ₄ "	96 - 37 ³ / ₄ "	96 - 37 ³ / ₄ "	96 - 37 ³ / ₄ "	96 - 37 ³ / ₄ "	96 - 37 ³ / ₄ "
height bed base H1	30 - 11 ⁷ / ₈ "	30 - 11 ⁷ / ₈ "	30 - 11 ⁷ / ₈ "	30 - 11 ⁷ / ₈ "	30 - 11 ⁷ / ₈ "	30 - 11 ⁷ / ₈ "	30 - 11 ⁷ / ₈ "
inner dimension (cm)							
width L1	100 - 39 ³ / ₈ "	120 - 47 ¹ / ₄ "	160 - 63"	170 - 66 ⁷ / ₈ "	180 - 70 ⁷ / ₈ "	155 - 61"	195 - 76 ³ / ₄ "
length P2	200 - 78 ³ / ₄ "	210 - 82 ³ / ₄ "	210 - 82 ³ / ₄ "	210 - 82 ³ / ₄ "	210 - 82 ³ / ₄ "	205 - 80 ³ / ₄ "	205 - 80 ³ / ₄ "

required height
to insert slatted base D

